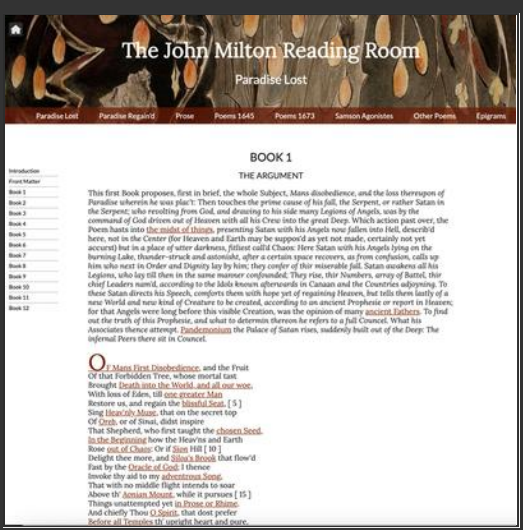




Source text analysis

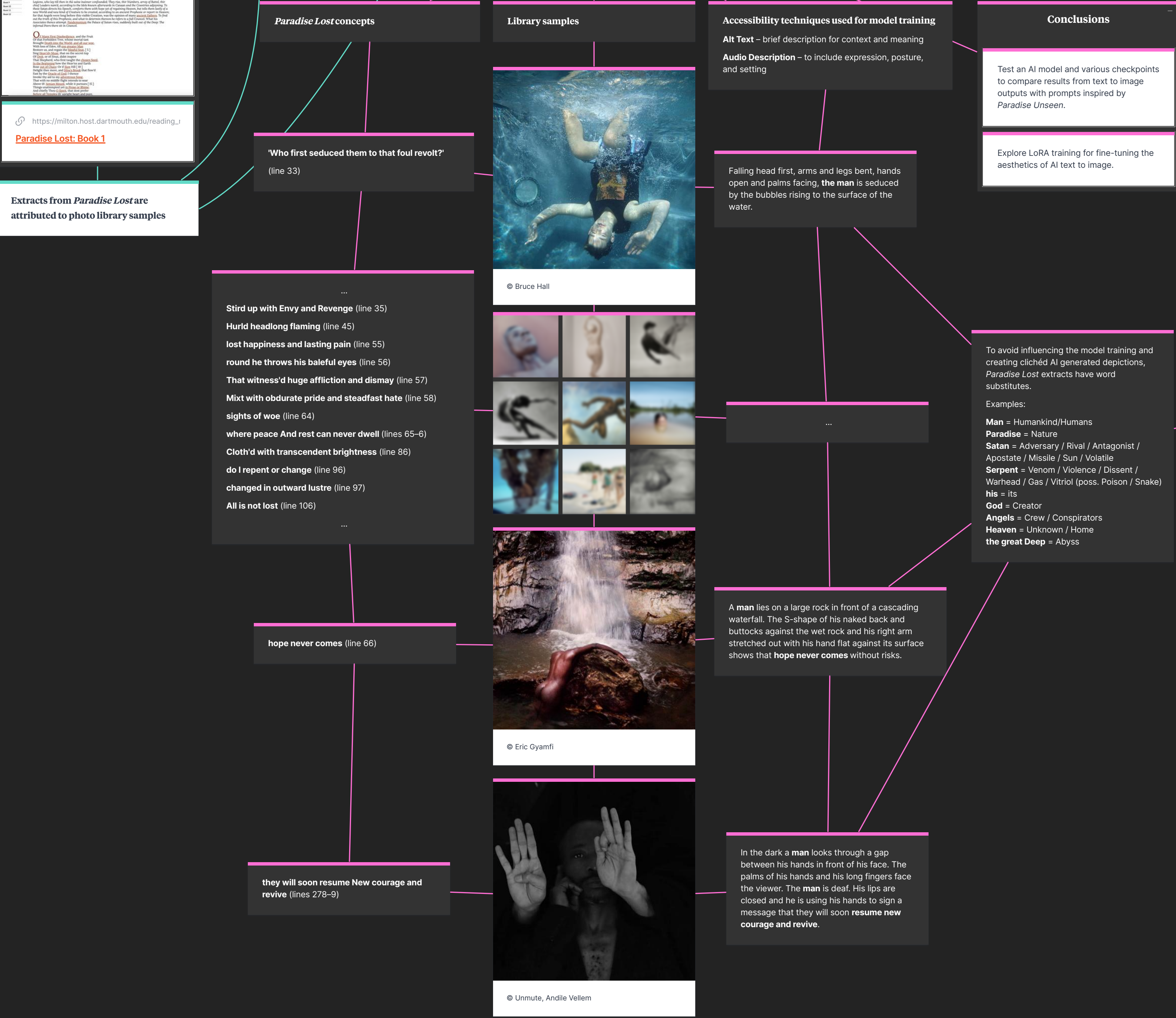


[https://mlton.host.dar.mouth.edu/reading\\_1](https://mlton.host.dar.mouth.edu/reading_1)  
Paradise Lost: Book 1

Extracts from *Paradise Lost* are attributed to photo library samples

## Building a library of images linked to chosen extracts from *Paradise Lost*

Category: people



## ComfyUI text-to-image checkpoint and workflow test

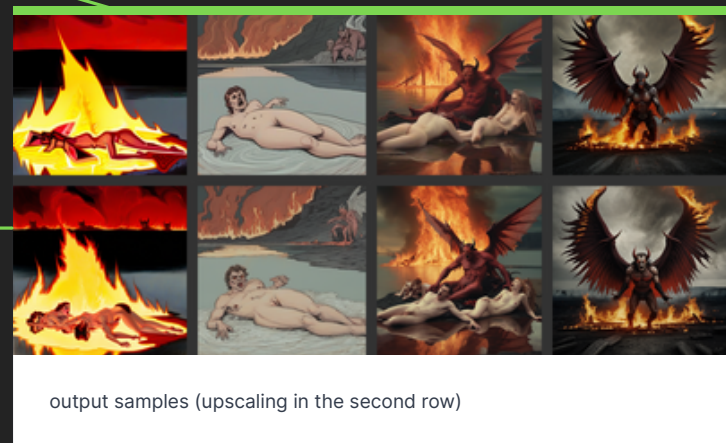
Checkpoint, workflow and prompts test #1 (samples) (including upscaling)

Checkpoints used: juggernautXL, afroditeXNudePeople, epicphotogasm, homofidels, leosamsHelloworldXL

Example prompts:

Positive: Satan with his Angels lying on the burning Lake, looking thunderstruck and astonished, confer of their miserable fall. Muted colours.

Negative: Floating bodies celebrating a great victory, emanating peace and serenity.



output samples (upscaling in the second row)

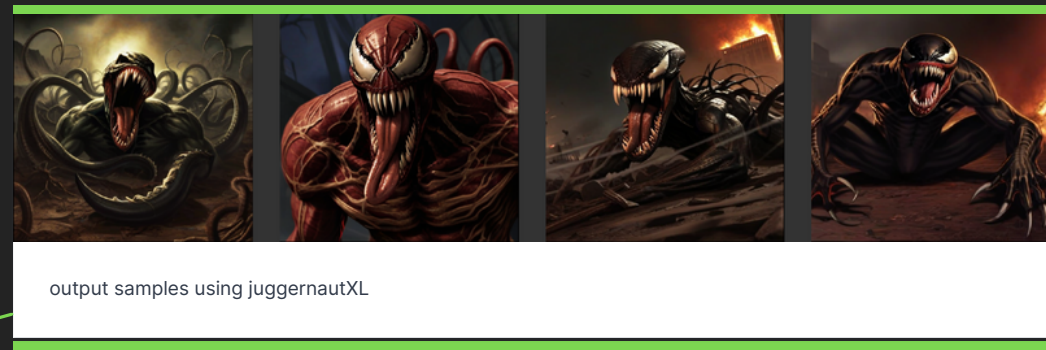
Checkpoint, workflow and prompts test #2 (samples)

Checkpoints used: juggernautXL, afroditeXNudePeople, epicphotogasm, homofidels, leosamsHelloworldXL

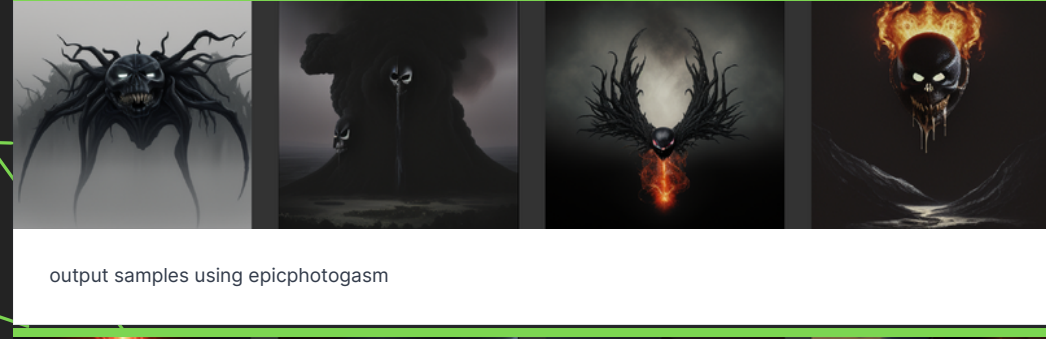
Example prompts:

Positive: The thoughtlessness of humankind, and the loss of Nature as it was intended is the focus, referring in particular to humanity's decline. To include the destruction of the Adversary, or rather the Venom of the Adversary, who rebelling from the Creator, and by gathering many Conspirators, was driven out by the Creator into the great Unknown.

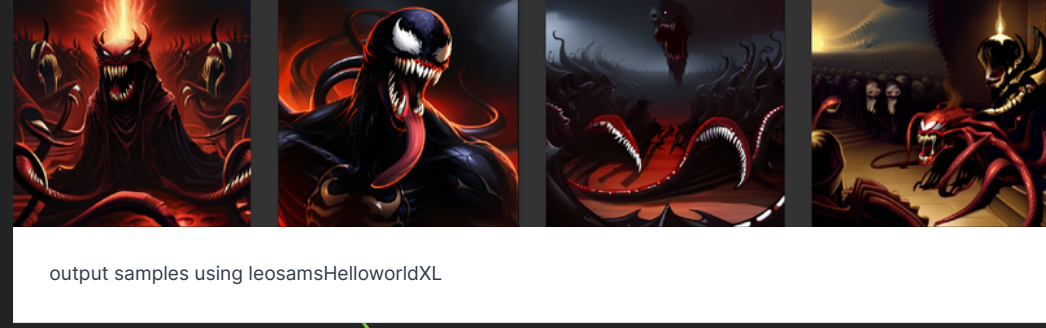
Negative: People's kindness in the preservation of nature creates a world for all living creatures.



output samples using juggernautXL



output samples using epicphotogasm



output samples using leosamsHelloworldXL

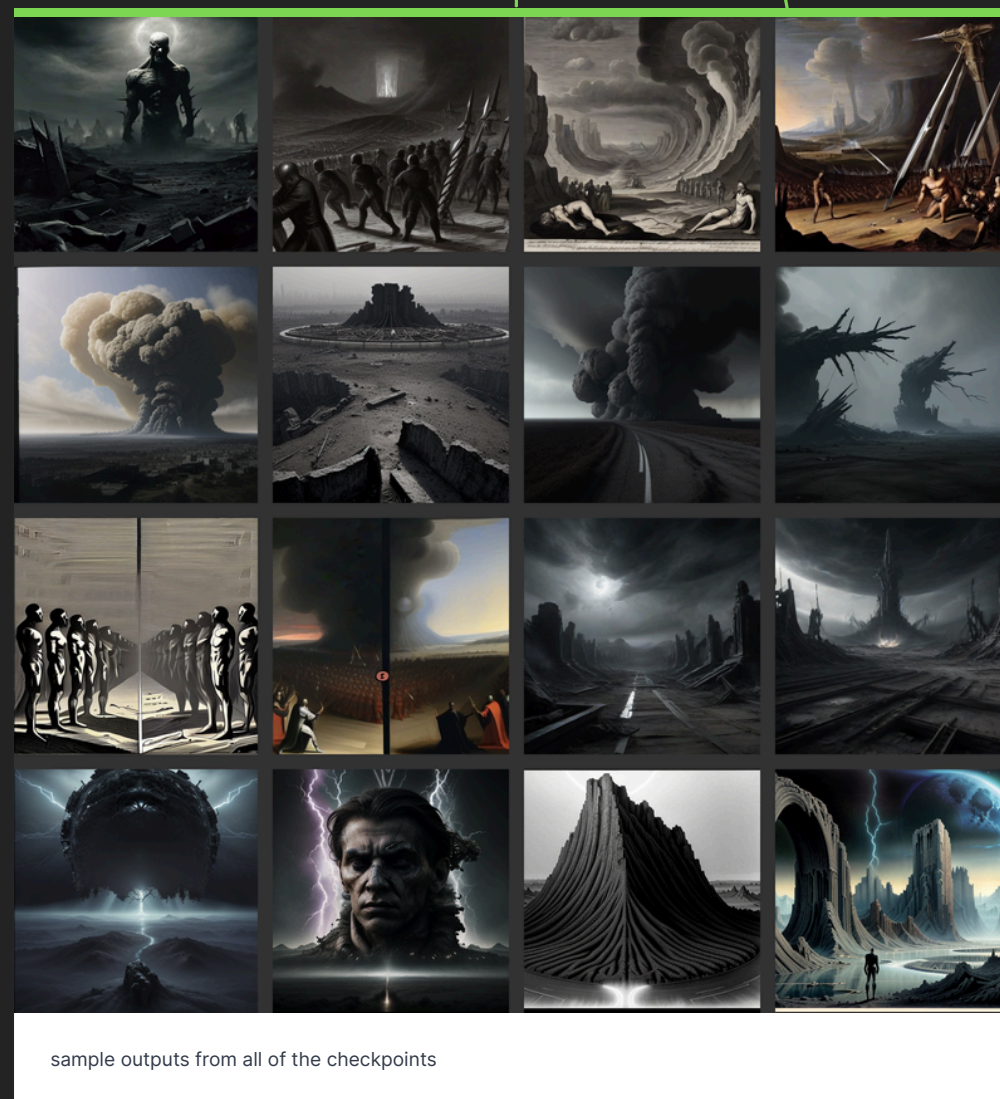
Checkpoint, workflow and prompts test #3 (samples)

Checkpoints used: juggernautXL, afroditeXNudePeople, epicphotogasm, homofidels, leosamsHelloworldXL, betterThanWords, epicrealism\_natural, realisticVision

Example prompts:

Positive: The thoughtlessness of humankind, and the loss of Nature as it was intended is the focus, referring in particular to humanity's decline. To include the destruction of the Rival, or rather the Vitriol of the Rival, who rebelling from the Creator, and by gathering many Conspirators, was driven out by the Creator into the great Unknown.

Negative: People's kindness in the preservation of nature creates a world for all living creatures.



sample outputs from all of the checkpoints

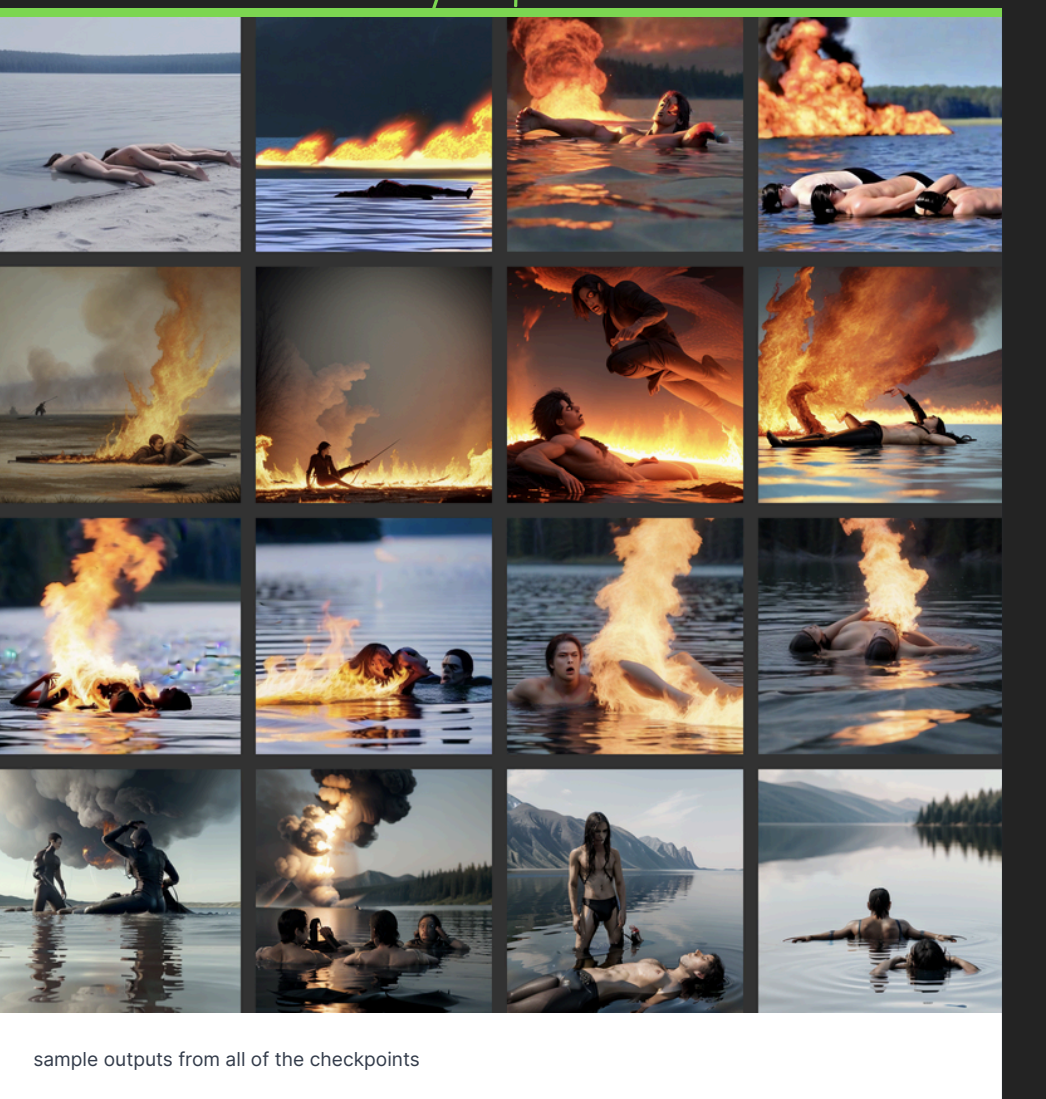
Checkpoint, workflow and prompts test #3 (samples)

Checkpoints used: juggernautXL, afroditeXNudePeople, epicphotogasm, homofidels, leosamsHelloworldXL, betterThanWords, epicrealism\_natural, realisticVision

Example prompts:

Positive: Here the Rival and his Conspirators lying on the burning Lake, shocked and overwhelmed, begin to ordinate themselves. The Rival calls to a Conspirator next in Rank and File closest to him and they discuss their terrible fall.

Negative: A leader and his supporters gather in their local town centre. The leader tells a newcomer how much the town has prospered in recent years.



sample outputs from all of the checkpoints

Checkpoint, workflow and prompts test #4-6 (samples)

Checkpoints used: juggernautXL, epicphotogasm, dreamshaper, leosamsHelloworldXL, betterThanWords, icbing/CamBellevets, realisticVision

Focus on diversifying prompts.

Example prompt modifications:

Prompt 1A: The limitations of Humankind, their effect on Nature is the focus, referring in particular to Humanity's decline. This includes the actions of the Antagonist, or rather its Violence, who rebelling against the Creator and by gathering its Crew was driven out into the great Unknown.

Prompt 1B: The limitations of Humankind, their effect on Nature is the focus, referring in particular to Humanity's decline. This includes the actions of the Apostate, or rather its Dissent, who rebelling against the Creator and by gathering its Crew was driven out into the great Unknown.

Prompt 1C: A landscape depicts the destruction of Nature and the decline of Humanity. This destruction of Nature was caused by the actions of the Antagonist and his Violence, who rebelled against the Creator. The Antagonist and his Crew are driven out into the great Unknown.

Prompt 1D: The Antagonist and his Crew rebelled against the Creator and are driven out into the great Unknown. The landscape is of the destruction of Nature and the decline of Humanity.

Negative prompt 1: People's kindness in the preservation of nature creates a world for all living creatures. Sci-fi, cyberpunk, steampunk, video games, hentai

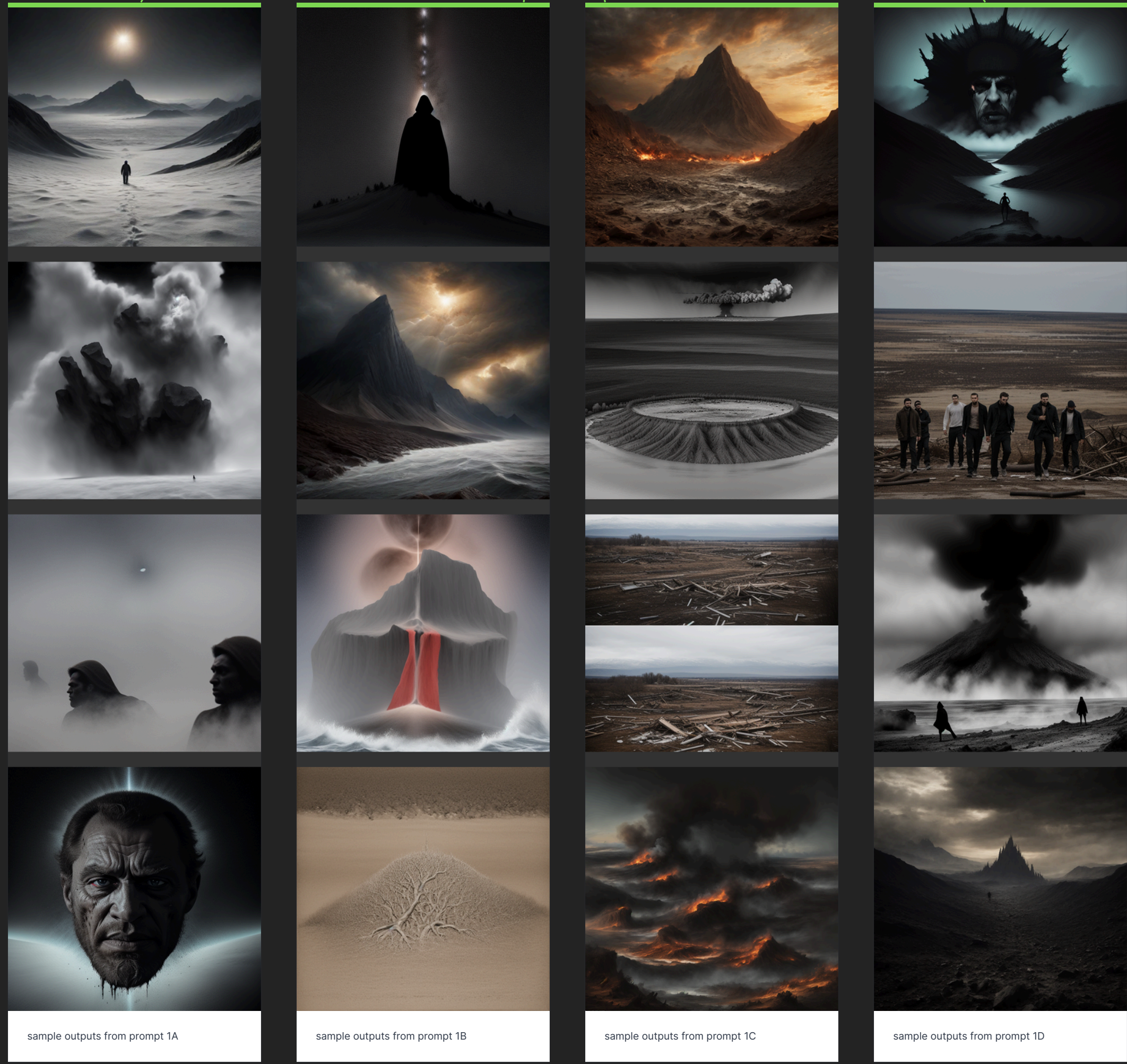
## To explore

Could we begin to test AI bias using a library of 200 photographs (self-portraits by disabled artists) for LoRA model training?

Or would we need to add the 200 photographs to a large library like <https://source.coral>?

How could we avoid the LoRA we train by incorporating references from our photo library being overridden by a checkpoint style aesthetic?

Could we include an interactive approach to this exploratory design?



sample outputs from prompt 1A

sample outputs from prompt 1B

sample outputs from prompt 1C

sample outputs from prompt 1D